

Co Ordinator



Have you been frustrated by trying to import or export coordinate data into AutoCAD? There are a large number of data sources such as Excel spreadsheets and ASCII files that could be used in AutoCAD. These files can come from numerous places such as Unix based programs, GIS products, old DOS based products or even just a data-logger. While it should be a quick and simple task to get this data into AutoCAD, if you have ever tried this, you know that this has not been the case – until now!

CoOrdinator provides a convenient and easy way to import or export data into and out of AutoCAD using just about any ASCII format. This data can be brought into AutoCAD as points, polylines or even a block. Export data can include non-coordinate data such as text string values or symbol/block attribute data.

COORDINATOR

- Allows for multiple coordinate string definition by code value, line and vertex number, or single line delimiter configuration.
- The user specifies the AutoCAD object to be used to plot the imported coordinates (points, lines, 2D polylines, 3D polylines, text or symbols).
- Representation of import file non-coordinate data as text or symbol attribute.
- Export of user selected AutoCAD objects to user specified format ASCII data file in any location with any extension, AutoCAD data can include non-coordinate data such as text string value or symbol/block attribute data.

Wide compatibility

CoOrdinator allows you to define your import data in a flexible and easy manner. It is not locked into any pre-defined format making it compatible with just about any ASCII file, independent of source software, platform or file extension.

Flexible data definition

The ability to specify the field formats in terms of data delimiter and coordinate order gives you great flexibility. The usual data delimiters such as comma, spaces and tabs are catered for but in addition, you may define any delimiter you like – even if it is made up of multiple characters.

Points or lines

Data can be defined as points (single coordinate) or lines (multiple coordinate strings). Multiple coordinate strings can be defined by using a code, using line number/point number codes or by using any line delimiter you specify – even multiple characters or multiple lines.

Headers

Most data files have a header section that you do not want to use or import. CoOrdinator provides a point and click method of defining the header section. No guessing or trying to count the number of lines in the data file.

Constants

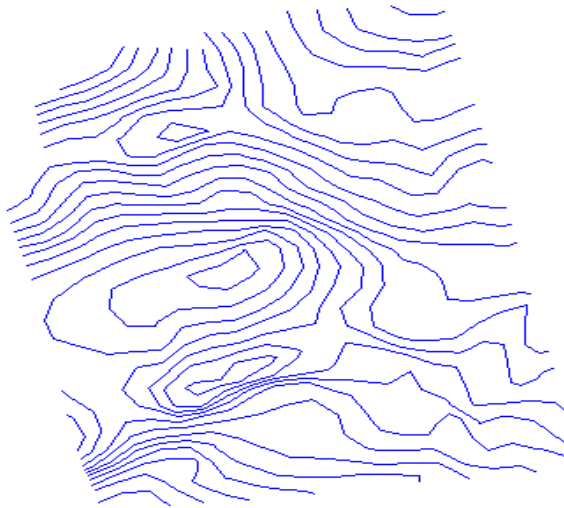
Often you need to offset your coordinates by a set amount to get them into the right position. CoOrdinator allows you to define constants to be applied to the Easting(X) or Northing(Y) coordinates. These constants may be positive or negative.

AutoCAD objects

You specify the AutoCAD object that is used to place the imported coordinates. These may be a point, line, 2D polyline, 3D polyline, text or even a block or symbol. When exporting, information from symbol/block attribute data or text values can be included.

COORDINATOR

```
1373.738 100.000 800.000
1418.949 142.284 800.000
1496.534 154.919 800.000
1521.247 149.036 800.000
$
100.000 2148.530 340.000
177.585 2118.246 340.000
255.170 2129.613 340.000
279.483 2168.201 340.000
297.620 2192.219 340.000
$
100.000 2085.143 360.000
177.585 2063.056 360.000
255.170 2046.804 360.000
306.352 2091.601 360.000
332.756 2126.406 360.000
375.454 2168.201 360.000
399.162 2192.219 360.000
$
100.000 2054.091 380.000
177.585 2023.620 380.000
202.635 2015.001 380.000
255.170 1997.417 380.000
332.756 1988.536 380.000
410.341 2002.666 380.000
419.407 2015.001 380.000
410.341 2047.412 380.000
385.013 2091.601 380.000
410.341 2116.403 380.000
477.887 2168.201 380.000
```



Go from text to drawing - quickly and easily.

File formats

Flat ASCII data files containing coordinate data are addressed by **CoOrdinator** using the following definitions:

- Coordinate data is represented as a northing, easting and optional elevation, with optional associated textual data.
- Fields can be separated by any delimiter including commas, spaces, tabs or any user defined delimiter.
- Coordinates represent either single coordinate locations or multiple coordinate strings.
- Multiple coordinate strings are defined by associative codes or by line number/point number codes or by line delimiters.
- Data files can include header sections, as can individual multiple coordinate strings.

Main CoOrdinator features

- Supports any format ASCII file, independent of source software, platform or file extension.
- The ability to specify the import or export field formats in terms of data delimiter and coordinate order.
- Coordinates may have a positive or negative constant applied to

either one or both the northing and the easting.

- Allows for multiple coordinate string definition by code value, line and vertex number
- Allows for single line delimiter configuration.
- The user specifies the AutoCAD object to be used to plot the imported coordinates (points, lines, 2D polylines, 3D polylines, text or symbols).
- Representation of import file non-coordinate data as text or symbol attribute.
- Export of user selected AutoCAD objects to user specified format ASCII data file in any location with any extension.
- AutoCAD data can include non-coordinate data such as text string value or symbol/block attribute data.

In AutoCAD:

- Tabular representation of selected AutoCAD object coordinates on the drawing as table of coordinates.
- Special rotational labelling associated with the table of coordinates.

System Requirements

- **CoOrdinator** requires the full capability of AutoCAD R2000 and is not able to run on earlier versions. The system will operate under Windows® XP, Windows 2000, Windows 98, Windows ME, or Windows NT® 4.0 (SP5 or later)
- Hardware requirements are as for AutoCAD R2000 but the recommended minimum is:
- Intel® Pentium® III 750 MHz
 - 128 Mb RAM
 - 15Gb HDD
 - 1024x768 4Mb display

Purchase or learn more

To purchase this software talk to your AutoCAD reseller or visit our website coordinator.cgssinc.com

For further information please contact: Sales@cgssinc.com

CGSS
Software with Intelligence

USA	United Kingdom
6250 Bono Court	Suite 586
Dublin, Ohio 43016	24-28 St Leonards Rd
Tel: (614) 946 7834	Tel: 01753-840222
	Fax: 01753-842922